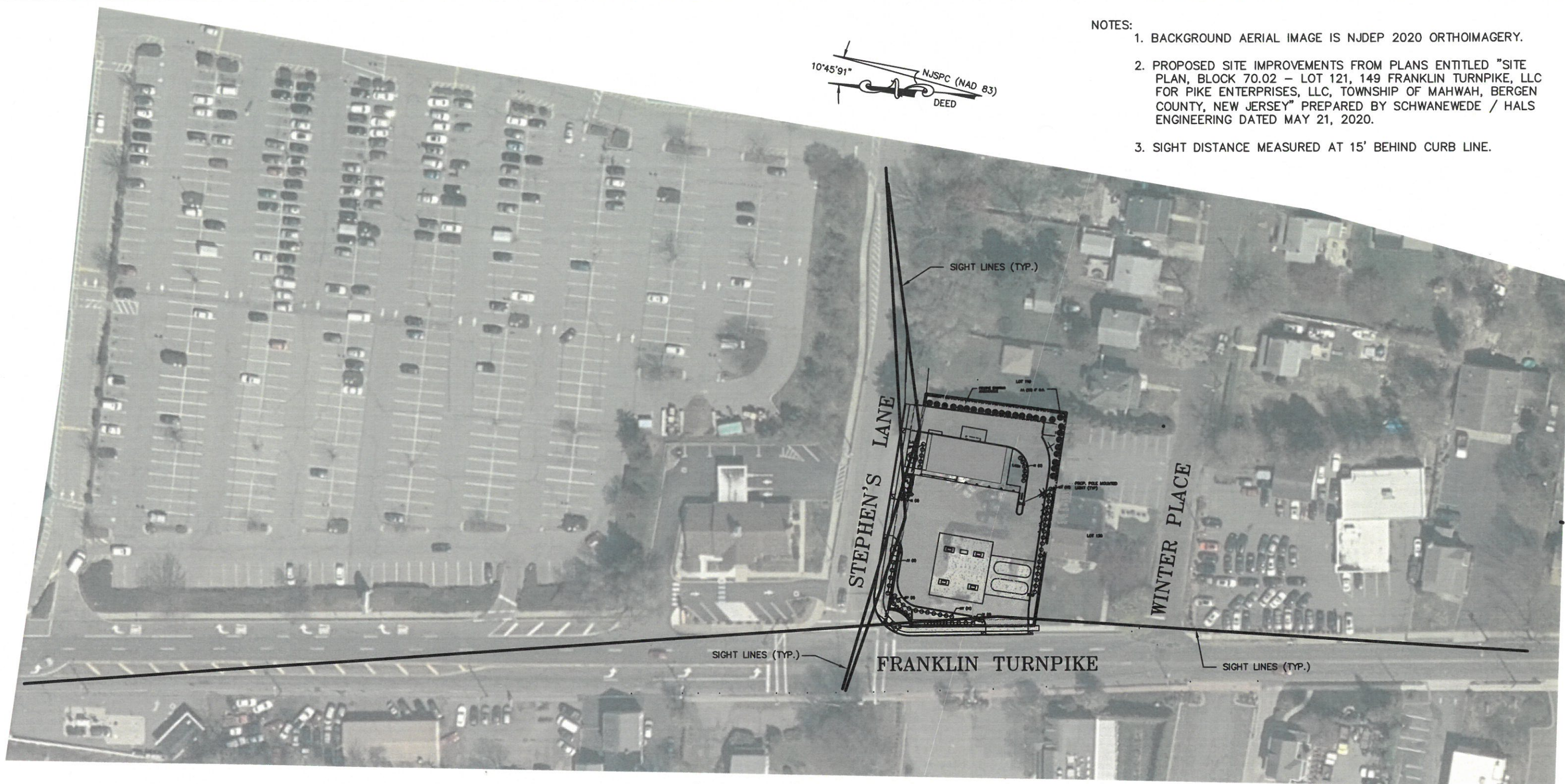
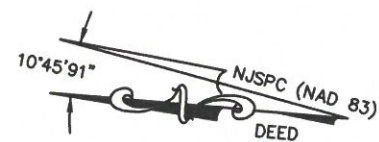
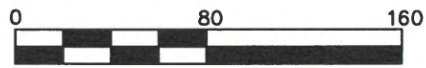


NOTES:

1. BACKGROUND AERIAL IMAGE IS NJDEP 2020 ORTHOIMAGERY.
2. PROPOSED SITE IMPROVEMENTS FROM PLANS ENTITLED "SITE PLAN, BLOCK 70.02 - LOT 121, 149 FRANKLIN TURNPIKE, LLC FOR PIKE ENTERPRISES, LLC, TOWNSHIP OF MAHWAH, BERGEN COUNTY, NEW JERSEY" PREPARED BY SCHWANEWED / HALS ENGINEERING DATED MAY 21, 2020.
3. SIGHT DISTANCE MEASURED AT 15' BEHIND CURB LINE.



SIGHT DISTANCE TABLE			
ROAD / LOCATION	DIRECTION	DISTANCE	REQUIRED
STEPHENS LANE EAST DRIVEWAY	EAST	200'	175'
STEPHENS LANE EAST DRIVEWAY	WEST	220' (END OF RD.)	175'
STEPHENS LANE WEST DRIVEWAY	EAST	265'	175'
STEPHENS LANE WEST DRIVEWAY	WEST	150' (END OF RD.)	175'
FRANKLIN TURNPIKE DRIVEWAY	NORTH	790'	N/A
FRANKLIN TURNPIKE DRIVEWAY	SOUTH	435'	335'



GRAPHIC SCALE

REVISIONS		
NO.	DATE	DESCRIPTION

SCHWANEWED/HALS ENGINEERING
 9 POST ROAD, SUITE M-11
 OAKLAND, NEW JERSEY 07436
 PH: 201-337-0053 - FAX: 201-337-0173
 EMAIL: HALSENG@OPTONLINE.COM
 WWW.HALSENGINEERING.COM

Joseph F. Vince
 JOSEPH F. VINCE, P.E., L.S.
 N.J. PROFESSIONAL ENGINEER & LAND SURVEYOR LIC. NO. 6842588

SIGHT DISTANCE EXIBIT

PIKE ENTERPRISES, LLC
 149 FRANKLIN TURNPIKE
 BLOCK 70.02 - LOT 121
 TOWNSHIP OF MAHWAH
 BERGEN COUNTY, NEW JERSEY

DATE: 9/2/21	SCALE: 1"=80'	JOB: 7946-2202
DRAWN BY: JV	CHECKED BY: JV	SHEET: 1 OF 1